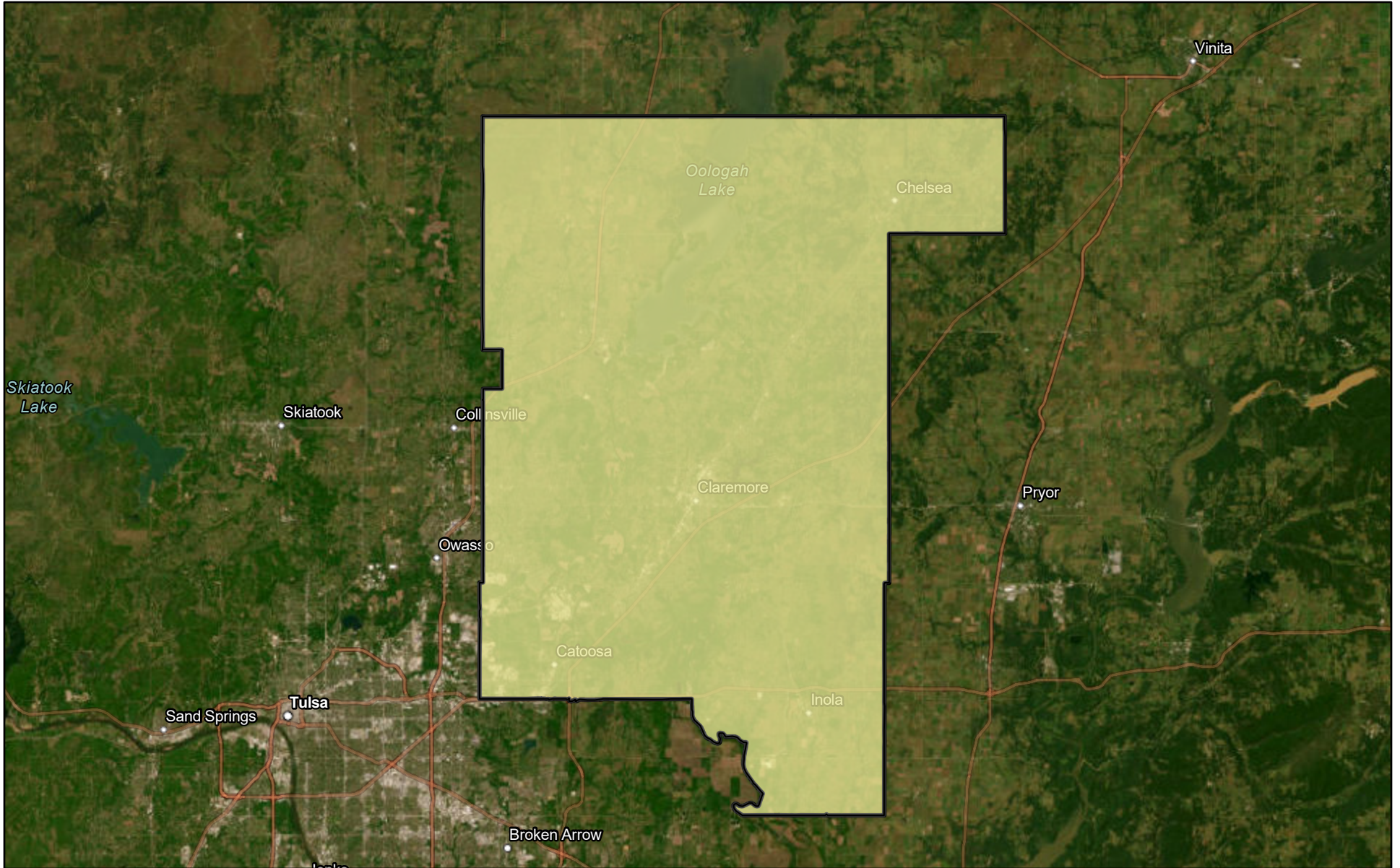
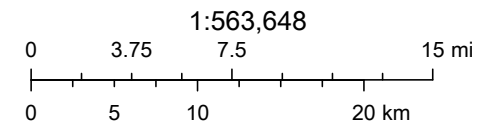


Rogers County, OK



12/26/2022

 EDO Boundary



Source: Esri, Maxar, GeoEye, Earthstar Geographics, CNES/Airbus DS, USDA, USGS, AeroGRID, IGN, and the GIS User Community, Sources: Esri,



Executive Summary

Rogers County, OK (40131)
Rogers County, OK (40131)
Geography: County

Prepared by Esri

Rogers County...

Population

2010 Population	86,905
2020 Population	95,240
2022 Population	97,193
2027 Population	100,050
2010-2020 Annual Rate	0.92%
2020-2022 Annual Rate	0.91%
2022-2027 Annual Rate	0.58%
2022 Male Population	49.4%
2022 Female Population	50.6%
2022 Median Age	40.0

In the identified area, the current year population is 97,193. In 2020, the Census count in the area was 95,240. The rate of change since 2020 was 0.91% annually. The five-year projection for the population in the area is 100,050 representing a change of 0.58% annually from 2022 to 2027. Currently, the population is 49.4% male and 50.6% female.

Median Age

The median age in this area is 40.0, compared to U.S. median age of 38.9.

Race and Ethnicity

2022 White Alone	66.4%
2022 Black Alone	1.2%
2022 American Indian/Alaska Native Alone	13.1%
2022 Asian Alone	1.8%
2022 Pacific Islander Alone	0.0%
2022 Other Race	2.2%
2022 Two or More Races	15.2%
2022 Hispanic Origin (Any Race)	5.5%

Persons of Hispanic origin represent 5.5% of the population in the identified area compared to 19.0% of the U.S. population. Persons of Hispanic Origin may be of any race. The Diversity Index, which measures the probability that two people from the same area will be from different race/ethnic groups, is 56.8 in the identified area, compared to 71.6 for the U.S. as a whole.

Households

2022 Wealth Index	89
2010 Households	31,884
2020 Households	35,179
2022 Households	35,970
2027 Households	37,136
2010-2020 Annual Rate	0.99%
2020-2022 Annual Rate	0.99%
2022-2027 Annual Rate	0.64%
2022 Average Household Size	2.65

The household count in this area has changed from 35,179 in 2020 to 35,970 in the current year, a change of 0.99% annually. The five-year projection of households is 37,136, a change of 0.64% annually from the current year total. Average household size is currently 2.65, compared to 2.66 in the year 2020. The number of families in the current year is 26,862 in the specified area.

Data Note: Income is expressed in current dollars. Housing Affordability Index and Percent of Income for Mortgage calculations are only available for areas with 50 or more owner-occupied housing units.

Source: U.S. Census Bureau. Esri forecasts for 2022 and 2027. Esri converted Census 2010 data into 2020 geography.



Executive Summary

Rogers County, OK (40131)
Rogers County, OK (40131)
Geography: County

Prepared by Esri

Rogers County...

Mortgage Income

2022 Percent of Income for Mortgage 15.3%

Median Household Income

2022 Median Household Income \$71,230

2027 Median Household Income \$80,478

2022-2027 Annual Rate 2.47%

Average Household Income

2022 Average Household Income \$94,846

2027 Average Household Income \$107,897

2022-2027 Annual Rate 2.61%

Per Capita Income

2022 Per Capita Income \$35,202

2027 Per Capita Income \$40,147

2022-2027 Annual Rate 2.66%

Households by Income

Current median household income is \$71,230 in the area, compared to \$72,414 for all U.S. households. Median household income is projected to be \$80,478 in five years, compared to \$84,445 for all U.S. households

Current average household income is \$94,846 in this area, compared to \$105,029 for all U.S. households. Average household income is projected to be \$107,897 in five years, compared to \$122,155 for all U.S. households

Current per capita income is \$35,202 in the area, compared to the U.S. per capita income of \$40,363. The per capita income is projected to be \$40,147 in five years, compared to \$47,064 for all U.S. households

Housing

2022 Housing Affordability Index 158

2010 Total Housing Units 35,160

2010 Owner Occupied Housing Units 25,286

2010 Renter Occupied Housing Units 6,598

2010 Vacant Housing Units 3,276

2020 Total Housing Units 37,798

2020 Vacant Housing Units 2,619

2022 Total Housing Units 38,772

2022 Owner Occupied Housing Units 27,909

2022 Renter Occupied Housing Units 8,061

2022 Vacant Housing Units 2,802

2027 Total Housing Units 40,093

2027 Owner Occupied Housing Units 29,054

2027 Renter Occupied Housing Units 8,082

2027 Vacant Housing Units 2,957

Currently, 72.0% of the 38,772 housing units in the area are owner occupied; 20.8%, renter occupied; and 7.2% are vacant. Currently, in the U.S., 58.2% of the housing units in the area are owner occupied; 31.8% are renter occupied; and 10.0% are vacant. In 2020, there were 37,798 housing units in the area and 6.9% vacant housing units. The annual rate of change in housing units since 2020 is 1.14%. Median home value in the area is \$206,102, compared to a median home value of \$283,272 for the U.S. In five years, median value is projected to change by 3.83% annually to \$248,742.

Data Note: Income is expressed in current dollars. Housing Affordability Index and Percent of Income for Mortgage calculations are only available for areas with 50 or more owner-occupied housing units.

Source: U.S. Census Bureau. Esri forecasts for 2022 and 2027. Esri converted Census 2010 data into 2020 geography.



Retail Market Potential

Rogers County, OK (40131)
 Rogers County, OK (40131)
 Geography: County

Prepared by Esri

Demographic Summary		2022	2027
Population		97,193	100,050
Population 18+		75,713	77,910
Households		35,970	37,136
Median Household Income		\$71,230	\$80,478

Product/Consumer Behavior	Expected Number of Adults or HHs	Percent of Adults/HHs	MPI
Apparel (Adults)			
Bought any men's clothing in last 12 months	43,330	57.2%	104
Bought any women's clothing in last 12 months	37,441	49.5%	102
Bought any shoes in last 12 months	55,152	72.8%	101
Bought any fine jewelry in last 12 months	14,316	18.9%	99
Bought a watch in last 12 months	10,569	14.0%	98
Automobiles (Households)			
HH owns/leases any vehicle	33,791	93.9%	105
HH bought/leased new vehicle last 12 months	3,771	10.5%	109
Automotive Aftermarket (Adults)			
Bought gasoline in last 6 months	70,309	92.9%	105
Bought/changed motor oil in last 12 months	39,964	52.8%	111
Had tune-up in last 12 months	18,381	24.3%	99
Beverages (Adults)			
Drank non-diet (regular) in last 6 months	30,187	39.9%	101
Drank beer/ale in last 6 months	30,943	40.9%	100
Cameras (Adults)			
Own digital point & shoot camera/camcorder	7,970	10.5%	108
Own digital SLR camera/camcorder	7,219	9.5%	97
Printed digital photos in last 12 months	20,253	26.7%	106
Cell Phones (Adults/Households)			
Bought cell phone in last 12 months	24,001	31.7%	97
Have a smartphone	69,389	91.6%	100
Have a smartphone: Android phone (any brand)	32,100	42.4%	106
Have a smartphone: Apple iPhone	37,870	50.0%	95
Number of cell phones in household: 1	9,520	26.5%	86
Number of cell phones in household: 2	14,825	41.2%	107
Number of cell phones in household: 3+	11,038	30.7%	105
HH has cell phone only (no landline telephone)	24,038	66.8%	100
Computers (Households)			
HH owns a computer	29,291	81.4%	100
HH owns desktop computer	14,008	38.9%	103
HH owns laptop/notebook	23,665	65.8%	100
HH owns any Apple/Mac brand computer	6,648	18.5%	83
HH owns any PC/non-Apple brand computer	25,063	69.7%	105
HH purchased most recent computer in a store	13,932	38.7%	105
HH purchased most recent computer online	7,957	22.1%	98
HH spent \$1-\$499 on most recent home computer	6,165	17.1%	111
HH spent \$500-\$999 on most recent home computer	7,184	20.0%	105
HH spent \$1,000-\$1,499 on most recent home computer	4,178	11.6%	97
HH spent \$1,500-\$1,999 on most recent home computer	1,705	4.7%	90
HH spent \$2,000+ on most recent home computer	1,403	3.9%	83

Data Note: An MPI (Market Potential Index) measures the relative likelihood of the adults or households in the specified trade area to exhibit certain consumer behavior or purchasing patterns compared to the U.S. An MPI of 100 represents the U.S. average.

Source: These data are based upon national propensities to use various products and services, applied to local demographic composition. Usage data were collected by MRI-Simmons in a nationally representative survey of U.S. households. Esri forecasts for 2022 and 2027.



Retail Market Potential

Rogers County, OK (40131)
 Rogers County, OK (40131)
 Geography: County

Prepared by Esri

Product/Consumer Behavior	Expected Number of Adults or HHs	Percent of Adults/HHs	MPI
Convenience Stores (Adults)			
Shopped at convenience store in last 6 months	50,861	67.2%	107
Bought brewed coffee at convenience store in last 30 days	9,671	12.8%	103
Bought cigarettes at convenience store in last 30 days	6,428	8.5%	119
Bought gas at convenience store in last 30 days	33,902	44.8%	119
Spent at convenience store in last 30 days: \$1-19	5,652	7.5%	98
Spent at convenience store in last 30 days: \$20-\$39	8,255	10.9%	106
Spent at convenience store in last 30 days: \$40-\$50	6,996	9.2%	108
Spent at convenience store in last 30 days: \$51-\$99	4,968	6.6%	109
Spent at convenience store in last 30 days: \$100+	18,079	23.9%	117
Entertainment (Adults)			
Attended a movie in last 6 months	35,300	46.6%	97
Went to live theater in last 12 months	7,197	9.5%	94
Went to a bar/night club in last 12 months	12,964	17.1%	101
Dined out in last 12 months	40,647	53.7%	106
Gambled at a casino in last 12 months	8,371	11.1%	97
Visited a theme park in last 12 months	10,245	13.5%	94
Viewed movie (video-on-demand) in last 30 days	9,385	12.4%	96
Viewed TV show (video-on-demand) in last 30 days	6,234	8.2%	97
Watched any pay-per-view TV in last 12 months	4,786	6.3%	98
Downloaded a movie over the Internet in last 30 days	4,870	6.4%	84
Downloaded any individual song in last 6 months	14,164	18.7%	95
Used internet to watch a movie online in the last 30 days	22,343	29.5%	86
Used internet to watch a TV program online in last 30 days	14,888	19.7%	90
Played a video/electronic game (console) in last 12 months	8,878	11.7%	100
Played a video/electronic game (portable) in last 12 months	4,250	5.6%	94
Financial (Adults)			
Have home mortgage (1st)	31,379	41.4%	115
Used ATM/cash machine in last 12 months	44,920	59.3%	98
Own any stock	9,147	12.1%	101
Own U.S. savings bond	5,109	6.7%	109
Own shares in mutual fund (stock)	8,974	11.9%	106
Own shares in mutual fund (bonds)	5,639	7.4%	106
Have interest checking account	29,375	38.8%	110
Have non-interest checking account	27,810	36.7%	104
Have savings account	53,900	71.2%	104
Have 401K retirement savings plan	17,864	23.6%	108
Own/used any credit/debit card in last 12 months	68,073	89.9%	101
Avg monthly credit card expenditures: \$1-110	9,172	12.1%	101
Avg monthly credit card expenditures: \$111-\$225	6,124	8.1%	102
Avg monthly credit card expenditures: \$226-\$450	6,177	8.2%	93
Avg monthly credit card expenditures: \$451-\$700	6,198	8.2%	102
Avg monthly credit card expenditures: \$701-\$1,000	6,039	8.0%	106
Avg monthly credit card expenditures: \$1001-2000	7,774	10.3%	103
Avg monthly credit card expenditures: \$2001+	6,530	8.6%	97
Did banking online in last 12 months	40,836	53.9%	102
Did banking on mobile device in last 12 months	31,284	41.3%	99

Data Note: An MPI (Market Potential Index) measures the relative likelihood of the adults or households in the specified trade area to exhibit certain consumer behavior or purchasing patterns compared to the U.S. An MPI of 100 represents the U.S. average.

Source: These data are based upon national propensities to use various products and services, applied to local demographic composition. Usage data were collected by MRI-Simmons in a nationally representative survey of U.S. households. Esri forecasts for 2022 and 2027.



Retail Market Potential

Rogers County, OK (40131)
 Rogers County, OK (40131)
 Geography: County

Prepared by Esri

Product/Consumer Behavior	Expected Number of Adults/HHs	Percent of Adults/HHs	MPI
Grocery (Adults)			
HH used bread in last 6 months	34,328	95.4%	101
HH used chicken (fresh or frozen) in last 6 months	25,485	70.9%	103
HH used turkey (fresh or frozen) in last 6 months	5,783	16.1%	111
HH used fish/seafood (fresh or frozen) in last 6 months	20,413	56.8%	97
HH used fresh fruit/vegetables in last 6 months	31,702	88.1%	101
HH used fresh milk in last 6 months	30,966	86.1%	104
HH used organic food in last 6 months	7,331	20.4%	82
Health (Adults)			
Exercise at home 2+ times per week	29,366	38.8%	96
Exercise at club 2+ times per week	9,474	12.5%	91
Visited a doctor in last 12 months	61,754	81.6%	103
Used vitamin/dietary supplement in last 6 months	45,698	60.4%	99
Home (Households)			
HH did any home improvement in last 12 months	14,241	39.6%	116
HH used any maid/professional cleaning service in last 12 months	6,926	19.3%	94
HH purchased low ticket HH furnishings in last 12 months	8,117	22.6%	104
HH purchased big ticket HH furnishings in last 12 months	9,574	26.6%	102
HH bought any small kitchen appliance in last 12 months	9,095	25.3%	99
HH bought any large kitchen appliance in last 12 months	6,159	17.1%	110
Insurance (Adults/Households)			
Currently carry life insurance	40,671	53.7%	111
Carry medical/hospital/accident insurance	63,783	84.2%	104
Carry homeowner/personal property insurance	50,477	66.7%	118
Carry renter's insurance	6,266	8.3%	78
HH has auto insurance: 1 vehicle in household covered	9,055	25.2%	86
HH has auto insurance: 2 vehicles in household covered	12,049	33.5%	108
HH has auto insurance: 3+ vehicles in household covered	11,162	31.0%	125
Pets (Households)			
Household owns any pet	22,568	62.7%	120
Household owns any cat	10,676	29.7%	129
Household owns any dog	17,727	49.3%	125
Psychographics (Adults)			
Represents adults who "completely agree" with the statement:			
Buying American is important	31,014	41.0%	116
Buy based on quality not price	11,971	15.8%	92
Buy on credit rather than wait	8,917	11.8%	89
Only use coupons brands: usually buy	10,336	13.7%	100
Will pay more for environmentally safe products	8,675	11.5%	84
Buy based on price not brands	22,789	30.1%	105
Am interested in how to help the environment	12,977	17.1%	84
Reading (Adults)			
Bought digital book in last 12 months	12,646	16.7%	96
Bought hardcover book in last 12 months	18,373	24.3%	99
Bought paperback book in last 12 month	23,881	31.5%	101
Read any daily newspaper (paper version)	10,694	14.1%	92
Read any digital newspaper in last 30 days	33,855	44.7%	90
Read any magazine (paper/electronic version) in last 6 months	66,089	87.3%	99

Data Note: An MPI (Market Potential Index) measures the relative likelihood of the adults or households in the specified trade area to exhibit certain consumer behavior or purchasing patterns compared to the U.S. An MPI of 100 represents the U.S. average.

Source: These data are based upon national propensities to use various products and services, applied to local demographic composition. Usage data were collected by MRI-Simmons in a nationally representative survey of U.S. households. Esri forecasts for 2022 and 2027.



Retail Market Potential

Rogers County, OK (40131)
 Rogers County, OK (40131)
 Geography: County

Prepared by Esri

Product/Consumer Behavior	Expected Number of Adults or HHs	Percent of Adults/HHs	MPI
Restaurants (Adults)			
Went to family restaurant/steak house in last 6 months	53,268	70.4%	105
Went to family restaurant/steak house: 4+ times a month	16,864	22.3%	107
Went to fast food/drive-in restaurant in last 6 months	69,636	92.0%	102
Went to fast food/drive-in restaurant 9+ times/month	29,807	39.4%	104
Fast food restaurant last 6 months: eat in	18,790	24.8%	109
Fast food restaurant last 6 months: home delivery	7,230	9.5%	82
Fast food restaurant last 6 months: take-out/drive-thru	47,016	62.1%	111
Fast food restaurant last 6 months: take-out/walk-in	14,585	19.3%	90
Television & Electronics (Adults/Households)			
Own any tablet	43,021	56.8%	101
Own any e-reader	8,852	11.7%	96
Own e-reader/tablet: iPad	25,069	33.1%	95
HH has Internet connectable TV	16,120	44.8%	105
Own any portable MP3 player	10,495	13.9%	101
HH owns 1 TV	5,701	15.8%	81
HH owns 2 TVs	9,695	27.0%	98
HH owns 3 TVs	8,705	24.2%	109
HH owns 4+ TVs	8,841	24.6%	118
HH subscribes to cable TV	12,033	33.5%	90
HH subscribes to fiber optic	1,325	3.7%	68
HH owns portable GPS navigation device	8,801	24.5%	119
HH purchased video game system in last 12 months	2,052	5.7%	74
HH owns any Internet video device for TV	16,533	46.0%	101
Travel (Adults)			
Took domestic trip in continental US last 12 months	42,262	55.8%	105
Took 3+ domestic non-business trips in last 12 months	10,742	14.2%	113
Spent on domestic vacations in last 12 months: \$1-999	10,265	13.6%	108
Spent on domestic vacations in last 12 months: \$1,000-\$1,499	4,748	6.3%	101
Spent on domestic vacations in last 12 months: \$1,500-\$1,999	2,963	3.9%	104
Spent on domestic vacations in last 12 months: \$2,000-\$2,999	3,136	4.1%	110
Spent on domestic vacations in last 12 months: \$3,000+	5,289	7.0%	109
Domestic travel in last 12 months: used general travel website	4,141	5.5%	92
Took foreign trip (including Alaska and Hawaii) in last 3 years	21,736	28.7%	86
Took 3+ foreign trips by plane in last 3 years	4,374	5.8%	73
Spent on foreign vacations in last 12 months: \$1-999	4,754	6.3%	87
Spent on foreign vacations in last 12 months: \$1,000-\$2,999	2,331	3.1%	80
Spent on foreign vacations in last 12 months: \$3,000+	4,015	5.3%	88
Foreign travel in last 3 years: used general travel website	4,126	5.4%	84
Nights spent in hotel/motel in last 12 months: any	36,275	47.9%	106
Took cruise of more than one day in last 3 years	8,511	11.2%	104
Member of any frequent flyer program	16,597	21.9%	89
Member of any hotel rewards program	20,889	27.6%	107

Data Note: An MPI (Market Potential Index) measures the relative likelihood of the adults or households in the specified trade area to exhibit certain consumer behavior or purchasing patterns compared to the U.S. An MPI of 100 represents the U.S. average.

Source: These data are based upon national propensities to use various products and services, applied to local demographic composition. Usage data were collected by MRI-Simmons in a nationally representative survey of U.S. households. Esri forecasts for 2022 and 2027.



Business Summary

Rogers County, OK (40131)
 Rogers County, OK (40131)
 Geography: County

Prepared by Esri

Data for all businesses in area		Rogers County...			
Total Businesses:		2,846			
Total Employees:		29,385			
Total Residential Population:		97,193			
Employee/Residential Population Ratio (per 100 Residents)		30			
by SIC Codes	Businesses		Employees		
	Number	Percent	Number	Percent	
Agriculture & Mining	96	3.4%	610	2.1%	
Construction	247	8.7%	1,990	6.8%	
Manufacturing	134	4.7%	3,875	13.2%	
Transportation	120	4.2%	1,730	5.9%	
Communication	18	0.6%	110	0.4%	
Utility	24	0.8%	154	0.5%	
Wholesale Trade	104	3.7%	1,280	4.4%	
Retail Trade Summary	517	18.2%	5,244	17.8%	
Home Improvement	39	1.4%	510	1.7%	
General Merchandise Stores	23	0.8%	607	2.1%	
Food Stores	57	2.0%	723	2.5%	
Auto Dealers, Gas Stations, Auto Aftermarket	76	2.7%	521	1.8%	
Apparel & Accessory Stores	21	0.7%	74	0.3%	
Furniture & Home Furnishings	29	1.0%	92	0.3%	
Eating & Drinking Places	127	4.5%	2,021	6.9%	
Miscellaneous Retail	145	5.1%	696	2.4%	
Finance, Insurance, Real Estate Summary	275	9.7%	1,541	5.2%	
Banks, Savings & Lending Institutions	65	2.3%	472	1.6%	
Securities Brokers	23	0.8%	54	0.2%	
Insurance Carriers & Agents	54	1.9%	294	1.0%	
Real Estate, Holding, Other Investment Offices	133	4.7%	721	2.5%	
Services Summary	995	35.0%	10,882	37.0%	
Hotels & Lodging	29	1.0%	600	2.0%	
Automotive Services	85	3.0%	757	2.6%	
Motion Pictures & Amusements	65	2.3%	1,022	3.5%	
Health Services	168	5.9%	2,394	8.1%	
Legal Services	43	1.5%	149	0.5%	
Education Institutions & Libraries	68	2.4%	2,107	7.2%	
Other Services	537	18.9%	3,853	13.1%	
Government	98	3.4%	1,726	5.9%	
Unclassified Establishments	218	7.7%	243	0.8%	
Totals	2,846	100.0%	29,385	100.0%	

Source: Copyright 2022 Data Axle, Inc. All rights reserved. Esri Total Residential Population forecasts for 2022.

Date Note: Data on the Business Summary report is calculated using **Esri's Data allocation method** which uses census block groups to allocate business summary data to custom areas.

December 26, 2022



Business Summary

Rogers County, OK (40131)
 Rogers County, OK (40131)
 Geography: County

Prepared by Esri

by NAICS Codes	Businesses		Employees	
	Number	Percent	Number	Percent
Agriculture, Forestry, Fishing & Hunting	46	1.6%	224	0.8%
Mining	2	0.1%	5	0.0%
Utilities	13	0.5%	95	0.3%
Construction	255	9.0%	2,177	7.4%
Manufacturing	140	4.9%	3,823	13.0%
Wholesale Trade	95	3.3%	1,200	4.1%
Retail Trade	378	13.3%	3,216	10.9%
Motor Vehicle & Parts Dealers	61	2.1%	401	1.4%
Furniture & Home Furnishings Stores	12	0.4%	32	0.1%
Electronics & Appliance Stores	13	0.5%	50	0.2%
Bldg Material & Garden Equipment & Supplies Dealers	38	1.3%	525	1.8%
Food & Beverage Stores	51	1.8%	671	2.3%
Health & Personal Care Stores	30	1.1%	399	1.4%
Gasoline Stations	15	0.5%	120	0.4%
Clothing & Clothing Accessories Stores	23	0.8%	79	0.3%
Sport Goods, Hobby, Book, & Music Stores	24	0.8%	119	0.4%
General Merchandise Stores	23	0.8%	607	2.1%
Miscellaneous Store Retailers	52	1.8%	204	0.7%
Nonstore Retailers	36	1.3%	9	0.0%
Transportation & Warehousing	80	2.8%	1,587	5.4%
Information	36	1.3%	204	0.7%
Finance & Insurance	143	5.0%	827	2.8%
Central Bank/Credit Intermediation & Related Activities	64	2.2%	477	1.6%
Securities, Commodity Contracts & Other Financial	25	0.9%	56	0.2%
Insurance Carriers & Related Activities; Funds, Trusts &	54	1.9%	294	1.0%
Real Estate, Rental & Leasing	172	6.0%	555	1.9%
Professional, Scientific & Tech Services	194	6.8%	1,442	4.9%
Legal Services	52	1.8%	209	0.7%
Management of Companies & Enterprises	10	0.4%	63	0.2%
Administrative & Support & Waste Management & Remediation	87	3.1%	479	1.6%
Educational Services	72	2.5%	2,109	7.2%
Health Care & Social Assistance	236	8.3%	3,751	12.8%
Arts, Entertainment & Recreation	56	2.0%	1,041	3.5%
Accommodation & Food Services	164	5.8%	2,650	9.0%
Accommodation	29	1.0%	600	2.0%
Food Services & Drinking Places	135	4.7%	2,050	7.0%
Other Services (except Public Administration)	351	12.3%	1,968	6.7%
Automotive Repair & Maintenance	63	2.2%	690	2.3%
Public Administration	98	3.4%	1,726	5.9%
Unclassified Establishments	218	7.7%	243	0.8%
Total	2,846	100.0%	29,385	100.0%

Source: Copyright 2022 Data Axle, Inc. All rights reserved. Esri Total Residential Population forecasts for 2022.

Date Note: Data on the Business Summary report is calculated using **Esri's Data allocation method** which uses census block groups to allocate business summary data to custom areas.

December 26, 2022



Business Locator

Rogers County, OK (40131)
 Rogers County, OK (40131)
 Geography: County

Prepared by Esri

2010 Residential Population:	86,905	2022 Total Sales (\$000)	\$5,908,501
2022 Residential Population:	97,193	2022 Total Employees	29,795
2027 Residential Population:	100,050	Employee/Residential Population Ratio:	0.31:1
Annual Population Growth 2022 - 2027	0.58%	Total Number of Businesses:	2,924

SIC Code	Business Name	Franchise	Distance From Site in Miles	Employees	Sales (\$000)
805101	CLAREMORE VETERAN CTR W BLUE STARR DR CLAREMORE, OK 74017		0.31 N	300	\$7,370
723113	ACK ESTHETICS LLC W BERWICK CLAREMORE, OK 74017		0.32 S	3	\$84
472406	CRUISE SENSATIONS LLC FAIRWAY ST CLAREMORE, OK 74019		0.34 NW	0	\$0
794104	DIAMOND SPORTS COMPLEX W BLUE STARR DR CLAREMORE, OK 74017		0.44 N	7	\$689
794104	HILLCAT BASEBALL FIELD W BLUE STARR DR CLAREMORE, OK 74017		0.44 N	7	\$689
971102	NATIONAL GUARD W BLUE STARR DR CLAREMORE, OK 74017		0.46 N	4	\$0
422503	AFFORDABLE SELF STORAGE HOLLY RD CLAREMORE, OK 74019		0.47 S	1	\$100
822101	ROGERS STATE UNIVERSITY W WILL ROGERS BLVD CLAREMORE, OK 74017	BN	0.48 E	100	\$0
602103	ATM W WILL ROGERS BLVD CLAREMORE, OK 74017	o	0.48 E	0	\$0
922104	ROGERS STATE UNIV POLICE DEPT W WILL ROGERS BLVD CLAREMORE, OK 74017		0.48 E	10	\$0
483201	KRSC W WILL ROGERS BLVD CLAREMORE, OK 74017	2	0.48 E	5	\$768
594214	ROGERS STATE UNIV BOOKSTORE W WILL ROGERS BLVD CLAREMORE, OK 74017		0.48 E	6	\$624
799798	TULSA NATIONALS SOCCER CLUB W WILL ROGERS BLVD CLAREMORE, OK 74017		0.48 E	5	\$718
841201	OKLAHOMA MILITARY ACADEMY MSM W WILL ROGERS BLVD CLAREMORE, OK 74017	HM	0.48 E	3	\$0

Data Note: Businesses are listed based on their proximity to the study area location. A maximum of 250 records can be displayed on one report. Data on the Business Locations report is based on the businesses whose location falls within the area of study. Total Sales, Total Daytime Business Population, Total Number of Businesses, and the Daytime Business (pop)/Residential Ratio are calculated using the collection of business points that fall within the area of study.

Source: Copyright 2022 Data Axle and Esri. Esri Total Residential Population forecasts for 2022. Data Axle Business Locations (Q3 2022).



Business Locator

Rogers County, OK (40131)
 Rogers County, OK (40131)
 Geography: County

Prepared by Esri

SIC Code	Business Name	Franchise	Distance From Site in Miles	Employees	Sales (\$000)
873303	ROGERS STATE UNIV-DEVMNT-FNDTN W WILL ROGERS BLVD CLAREMORE, OK 74017		0.48 E	3	\$0
839907	ROGERS STATE UNIV FOUNDATION W WILL ROGERS BLVD CLAREMORE, OK 74017		0.48 E	6	\$0
483201	RSU RADIO IN STUDIO W WILL ROGERS BLVD CLAREMORE, OK 74017		0.48 E	6	\$921
999977	PSI CHI THE NATL HONOR SOCIETY W WILL ROGERS BLVD CLAREMORE, OK 74017		0.48 E	0	\$0
823109	RSU LIBRARIES-STRATTON TAYLOR W WILL ROGERS BLVD CLAREMORE, OK 74017	J	0.48 E	7	\$0
594201	ROGERS UNIVERSITY BOOKSTORE W WILL ROGERS BLVD CLAREMORE, OK 74017		0.48 E	3	\$312
999977	BRUNETTE BAKER WESTWOOD DR CLAREMORE, OK 74017		0.51 SE	0	\$0
541103	CASEY'S HOLLY RD CLAREMORE, OK 74019	9	0.52 S	12	\$1,697
598406	BLUE RHINO HOLLY RD CLAREMORE, OK 74019	H	0.52 S	0	\$0
821103	CLAREMORE PUBLIC SCHOOLS HOLLY RD CLAREMORE, OK 74017		0.58 SE	15	\$0
821103	WESTSIDE ELEMENTARY SCHOOL HOLLY RD CLAREMORE, OK 74017	EKN	0.58 SE	85	\$0
835101	BRIGHT BEGINNINGS HOLLY RD CLAREMORE, OK 74017		0.62 SE	12	\$208
599999	HANSFORD & HALEY W DRIFTWOOD DR CLAREMORE, OK 74017		0.65 E	2	\$305
671901	T A G HOLDINGS LLC COLONIAL DR CLAREMORE, OK 74019		0.67 SW	6	\$2,838
866107	WESTWOOD UNITED PENTECOSTAL WESTWOOD DR CLAREMORE, OK 74017	2	0.70 SE	1	\$0
866107	TEENUNIQUE WESTWOOD DR CLAREMORE, OK 74017	2	0.70 SE	1	\$0

Data Note: Businesses are listed based on their proximity to the study area location. A maximum of 250 records can be displayed on one report. Data on the Business Locations report is based on the businesses whose location falls within the area of study. Total Sales, Total Daytime Business Population, Total Number of Businesses, and the Daytime Business (pop)/Residential Ratio are calculated using the collection of business points that fall within the area of study.

Source: Copyright 2022 Data Axle and Esri. Esri Total Residential Population forecasts for 2022. Data Axle Business Locations (Q3 2022).



Business Locator

Rogers County, OK (40131)
 Rogers County, OK (40131)
 Geography: County

Prepared by Esri

SIC Code	Business Name	Franchise	Distance From Site in Miles	Employees	Sales (\$000)
999977	KNIGHT RENTALS LLC COLLEGE PARK RD CLAREMORE, OK 74017		0.76 NE	0	\$0
866107	CLAREMORE ASSEMBLY OF GOD W BLUE STARR DR CLAREMORE, OK 74017	2	0.82 NE	5	\$0
481207	CYBER SPACE LOGIC W 4TH PL S CLAREMORE, OK 74017		0.82 E	3	\$2,004
154213	QUALITY HOME BUILDERS LLC E HIGHWAY 20 CLAREMORE, OK 74019		0.83 SW	1	\$315
179921	KNAPP POOLS LLC E HIGHWAY 20 CLAREMORE, OK 74019		0.83 SW	5	\$637
152103	W4 CONSTRUCTION GROUP LLC E HIGHWAY 20 CLAREMORE, OK 74019		0.83 SW	15	\$4,722
628203	EDWARD JONES E HIGHWAY 20 CLAREMORE, OK 74019	E	0.83 SW	2	\$596
733603	PRAETORIAN GRAPHIC SOLUTIONS PECAN CHASE CIR CLAREMORE, OK 74017		0.83 E	2	\$109
866107	CHRIST PRESBYTERIAN CHURCH HOLLY RD CLAREMORE, OK 74017	3	0.85 SE	1	\$0
171108	A1 SEPTIC SVC HOLLY RD CLAREMORE, OK 74017		0.90 SE	4	\$452
602103	ATM HOLLY RD CLAREMORE, OK 74017	oy	0.91 SE	0	\$0
517206	FUEL RIGHT-CLAREMORE HOLLY RD CLAREMORE, OK 74017		0.91 SE	3	\$33,880
751303	U-HAUL NEIGHBORHOOD DEALER HOLLY RD CLAREMORE, OK 74017	6	0.91 SE	2	\$631
729934	CLASSY CURVES HOLLY RD CLAREMORE, OK 74017		0.91 SE	2	\$49
804101	HINDS FAMILY CHIROPRACTIC HOLLY RD CLAREMORE, OK 74017		0.91 SE	5	\$800
723106	RUMOURS 2 UNLIMITED HOLLY RD CLAREMORE, OK 74017		0.91 SE	5	\$112

Data Note: Businesses are listed based on their proximity to the study area location. A maximum of 250 records can be displayed on one report. Data on the Business Locations report is based on the businesses whose location falls within the area of study. Total Sales, Total Daytime Business Population, Total Number of Businesses, and the Daytime Business (pop)/Residential Ratio are calculated using the collection of business points that fall within the area of study.

Source: Copyright 2022 Data Axle and Esri. Esri Total Residential Population forecasts for 2022. Data Axle Business Locations (Q3 2022).



Business Locator

Rogers County, OK (40131)
 Rogers County, OK (40131)
 Geography: County

Prepared by Esri

SIC Code	Business Name	Franchise	Distance From Site in Miles	Employees	Sales (\$000)
421304	ALLIED CO CONCORD CIR CLAREMORE, OK 74019		0.92 SW	2	\$345
422503	AFFORDABLE SELF-STORAGE HOLLY RD CLAREMORE, OK 74017		0.93 SE	2	\$199
422508	UNIQUELY SUSIE'S HOLLY RD CLAREMORE, OK 74017		0.93 SE	2	\$251
653108	JWJ PROPERTIES LLC HOLLY RD CLAREMORE, OK 74017		0.94 SE	2	\$215
866104	ROGERS BAPTIST ASSN W BLUE STARR DR CLAREMORE, OK 74017		0.96 NE	2	\$0
581208	EL AZTECA MEXICAN RESTAURANT S BRADY ST CLAREMORE, OK 74017		0.97 E	16	\$625
641112	AAA OKLAHOMA INSURANCE AGENCY S BRADY ST CLAREMORE, OK 74017)7	0.98 E	3	\$383
533101	DOLLAR GENERAL W 4TH ST S CLAREMORE, OK 74017	D	0.98 E	7	\$1,082
598406	AMERIGAS PROPANE EXCHANGE W 4TH ST S CLAREMORE, OK 74017		0.98 E	0	\$0
653116	WILSON LILLIE-ASSOC APPRAISAL PECAN RIDGE CT CLAREMORE, OK 74017		0.98 N	3	\$322
753201	DENTED AUTO INC PECAN RIDGE CIR CLAREMORE, OK 74017		0.98 N	2	\$214
944102	HUMAN SERVICES DEPT HOLLY RD CLAREMORE, OK 74017		0.99 SE	110	\$0
919902	CLAREMORE CHILD SUPPORT OFFICE HOLLY RD CLAREMORE, OK 74017		0.99 SE	90	\$0
912103	ROGERS COUNTY DHS HOLLY RD CLAREMORE, OK 74017		0.99 SE	6	\$0
922302	JUVENILE AFFAIRS OFFICE S BRADY ST CLAREMORE, OK 74017		1.01 E	8	\$0
809203	FRESENIUS KIDNEY CARE S BRADY ST CLAREMORE, OK 74017		1.01 E	7	\$640

Data Note: Businesses are listed based on their proximity to the study area location. A maximum of 250 records can be displayed on one report. Data on the Business Locations report is based on the businesses whose location falls within the area of study. Total Sales, Total Daytime Business Population, Total Number of Businesses, and the Daytime Business (pop)/Residential Ratio are calculated using the collection of business points that fall within the area of study.

Source: Copyright 2022 Data Axle and Esri. Esri Total Residential Population forecasts for 2022. Data Axle Business Locations (Q3 2022).



Business Locator

Rogers County, OK (40131)
 Rogers County, OK (40131)
 Geography: County

Prepared by Esri

SIC Code	Business Name	Franchise	Distance From Site in Miles	Employees	Sales (\$000)
912103	ROGERS COUNTY JUVENILE SVC S BRADY ST CLAREMORE, OK 74017		1.01 E	8	\$0
799602	CLAREMORE SPLASH PAD CAMDEN ST CLAREMORE, OK 74017		1.02 E	6	\$949
804201	GRENE VISION GROUP PECAN RIDGE CT CLAREMORE, OK 74017		1.03 N	4	\$494
808201	COMMUNITY HOME HEALTH W BLUE STARR DR CLAREMORE, OK 74017		1.03 NE	71	\$6,191
806301	GRAND LAKE MENTAL HEALTH CTR W BLUE STARR DR CLAREMORE, OK 74017		1.03 NE	0	\$0
804101	RESET CHIROPRACTIC S BRADY ST CLAREMORE, OK 74017		1.03 E	2	\$133
723102	J H NAILS SPA LLC S BRADY ST CLAREMORE, OK 74017		1.03 E	2	\$56
736111	BEAST MODE TRAINING S BRADY ST CLAREMORE, OK 74017		1.03 E	2	\$148
581305	J FARLEY'S PUB S BRADY ST CLAREMORE, OK 74017		1.03 E	25	\$977
581208	ACCIO TACOS LLC S BRADY ST CLAREMORE, OK 74017		1.03 E	7	\$274
999977	RILEY 1983 LLC S BRADY ST CLAREMORE, OK 74017		1.03 E	0	\$0
599301	MY VAPE PLACE S BRADY ST CLAREMORE, OK 74017		1.05 E	3	\$743
653118	WAYNE CLARK REALTY) S BRADY ST CLAREMORE, OK 74017		1.06 E	3	\$322
804918	PER4MANCE PHYSICAL THERAPY LLC S BRADY ST CLAREMORE, OK 74017		1.07 E	7	\$320
581228	GREEN EYES COFFEE S BRADY ST CLAREMORE, OK 74017		1.07 E	5	\$0
602103	ATM ° N HIGHWAY 88 CLAREMORE, OK 74017		1.07 E	0	\$0

Data Note: Businesses are listed based on their proximity to the study area location. A maximum of 250 records can be displayed on one report. Data on the Business Locations report is based on the businesses whose location falls within the area of study. Total Sales, Total Daytime Business Population, Total Number of Businesses, and the Daytime Business (pop)/Residential Ratio are calculated using the collection of business points that fall within the area of study.

Source: Copyright 2022 Data Axle and Esri. Esri Total Residential Population forecasts for 2022. Data Axle Business Locations (Q3 2022).



Business Locator

Rogers County, OK (40131)
 Rogers County, OK (40131)
 Geography: County

Prepared by Esri

SIC Code	Business Name	Franchise	Distance From Site in Miles	Employees	Sales (\$000)
801104	FRANCESCO'S S BRADY ST CLAREMORE, OK 74017		1.08 E	6	\$800
866107	FIRST UNITED METHODIST CHURCH N HIGHWAY 88 CLAREMORE, OK 74017	R	1.09 NE	40	\$0
912103	ROGERS COUNTY CONSERVATION W WILL ROGERS CIR CLAREMORE, OK 74017		1.09 NE	6	\$0
951201	NATURAL RESOURCES CONSERVATION W WILL ROGERS CIR CLAREMORE, OK 74017		1.09 NE	3	\$0
951201	FARM SERVICE AGENCY W WILL ROGERS CIR CLAREMORE, OK 74017		1.09 NE	6	\$0
866107	CENTRAL CHRISTIAN CHURCH S BRADY ST CLAREMORE, OK 74017	F	1.09 E	2	\$0
836105	BROOKDALE STERLING HOUSE N HIGHWAY 88 CLAREMORE, OK 74017		1.10 NE	20	\$0
152144	TOMMY ANDREWS CONSTRUCTION COLLEGE PARK RD CLAREMORE, OK 74017		1.12 NE	3	\$945
841201	WILL ROGERS MEML MSM W WILL ROGERS BLVD CLAREMORE, OK 74017	H	1.12 E	18	\$0
866107	FREE WILL BAPTIST CHR CALVARY HOLLY RD CLAREMORE, OK 74017	C	1.13 SE	1	\$0
472401	CLAREMORE CONVENTION S VETERANS PKWY CLAREMORE, OK 74017		1.13 E	2	\$209
912104	CLAREMORE EXPO CTR S VETERANS PKWY CLAREMORE, OK 74017		1.13 E	10	\$0
823106	WILL ROGERS LIBRARY S VETERANS PKWY CLAREMORE, OK 74017		1.13 E	3	\$0
799101	CLAREMORE PARK RECREATION CTR S VETERANS PKWY CLAREMORE, OK 74017		1.14 E	63	\$4,326
871115	DOWELL'S ELECTRIC WORKS CHRISTMAS LN CLAREMORE, OK 74017		1.16 SE	5	\$783
581208	HAMMETT HOUSE RESTAURANT W WILL ROGERS BLVD CLAREMORE, OK 74017		1.16 E	50	\$1,953

Data Note: Businesses are listed based on their proximity to the study area location. A maximum of 250 records can be displayed on one report. Data on the Business Locations report is based on the businesses whose location falls within the area of study. Total Sales, Total Daytime Business Population, Total Number of Businesses, and the Daytime Business (pop)/Residential Ratio are calculated using the collection of business points that fall within the area of study.

Source: Copyright 2022 Data Axle and Esri. Esri Total Residential Population forecasts for 2022. Data Axle Business Locations (Q3 2022).



Business Locator

Rogers County, OK (40131)
 Rogers County, OK (40131)
 Geography: County

Prepared by Esri

SIC Code	Business Name	Franchise	Distance From Site in Miles	Employees	Sales (\$000)
943101	CLAREMORE INDIAN HOSPITAL S MOORE AVE CLAREMORE, OK 74017		1.18 E	375	\$0
919906	CHEROKEE NATION WIC S MOORE AVE CLAREMORE, OK 74017		1.18 E	2	\$0
839935	HEART COALITION INC S MOORE AVE CLAREMORE, OK 74017		1.18 E	1	\$0
806203	EMERGENCY DEPT CLAREMORE S MOORE AVE CLAREMORE, OK 74017		1.18 E	26	\$1,707
602103	ATM W DUPONT ST CLAREMORE, OK 74017	o	1.19 E	0	\$0
864102	VETERANS OF FOREIGN WARS W DUPONT ST CLAREMORE, OK 74017	K	1.19 E	1	\$0
581208	GOLDEN CHEF W WILL ROGERS BLVD CLAREMORE, OK 74017		1.20 E	3	\$118
581222	MAZZIO'S W WILL ROGERS BLVD CLAREMORE, OK 74017	w	1.23 E	23	\$899
737801	BLAKELY COMMUNICATIONS N BOLING ST CLAREMORE, OK 74017		1.24 E	1	\$92
899999	CLAREMORE SERVICE UNIT S MOORE & WILL ROGERS BLVD CLAREMORE, OK 74017		1.25 E	12	\$1,484
571220	SNOW'S MATTRESS W WILL ROGERS BLVD CLAREMORE, OK 74017		1.27 E	3	\$377
866107	LIFECHANGER CHURCH CORNERSTONE AVE CLAREMORE, OK 74017	1	1.27 NE	6	\$0
822298	NORTHEAST TECHNOLOGY CTR N HIGHWAY 88 CLAREMORE, OK 74017		1.28 NE	25	\$0
866107	WESTSIDE HOLINESS CHURCH N HIGHWAY 88 EXPY CLAREMORE, OK 74017	2	1.29 NE	2	\$0
866107	CLAREMORE PRAISE FELLOWSHIP S 4120 RD CLAREMORE, OK 74019		1.30 SW	4	\$0
866107	MEMORIAL HEIGHTS BAPTIST CHR W WILL ROGERS BLVD CLAREMORE, OK 74017	C	1.30 E	5	\$0

Data Note: Businesses are listed based on their proximity to the study area location. A maximum of 250 records can be displayed on one report. Data on the Business Locations report is based on the businesses whose location falls within the area of study. Total Sales, Total Daytime Business Population, Total Number of Businesses, and the Daytime Business (pop)/Residential Ratio are calculated using the collection of business points that fall within the area of study.

Source: Copyright 2022 Data Axle and Esri. Esri Total Residential Population forecasts for 2022. Data Axle Business Locations (Q3 2022).



Business Locator

Rogers County, OK (40131)
 Rogers County, OK (40131)
 Geography: County

Prepared by Esri

SIC Code	Business Name	Franchise	Distance From Site in Miles	Employees	Sales (\$000)
179403	HENDRIX CONSTRUCTION S DAVIS AVE CLAREMORE, OK 74017		1.31 E	1	\$113
506333	CLAREMORE MOTOR CO W WILL ROGERS BLVD CLAREMORE, OK 74017		1.31 E	3	\$2,420
791101	K & CO DANCE STUDIO S DAVIS AVE CLAREMORE, OK 74017		1.31 E	1	\$19
866107	CHRIST UNITED METHODIST CHURCH S DAVIS AVE CLAREMORE, OK 74017	R	1.32 E	3	\$0
152144	GRIGGS CONSTRUCTION CO S DAVIS AVE CLAREMORE, OK 74017		1.32 E	2	\$630
723106	SHEAR DELIGHT S DAVIS AVE CLAREMORE, OK 74017		1.33 E	7	\$196
729944	CLUB TAN S DAVIS AVE CLAREMORE, OK 74017		1.33 E	3	\$73
581208	EL BANQUETE W WILL ROGERS BLVD CLAREMORE, OK 74017		1.34 E	7	\$274
641112	TEDFORD INSURANCE W WILL ROGERS BLVD CLAREMORE, OK 74017		1.34 E	30	\$3,822
581208	SONIC DRIVE-IN W WILL ROGERS BLVD CLAREMORE, OK 74017	o	1.35 E	55	\$2,148
504509	CHEROKEE DATA SOLUTIONS LLC W BLUE STARR DR CLAREMORE, OK 74017		1.36 E	5	\$6,515
175203	J G FLOORS & MORE LLC W WILL ROGERS BLVD CLAREMORE, OK 74017		1.36 E	2	\$226
811103	ABBOTT LAW FIRM PLLC W WILL ROGERS BLVD CLAREMORE, OK 74017		1.36 E	3	\$391
154101	RAPID RESPONSE RESTORATION LLC W WILL ROGERS BLVD CLAREMORE, OK 74017		1.36 E	3	\$945
154213	STIMSON BROS CONSTRUCTION W OKLAHOMA ST CLAREMORE, OK 74017		1.36 E	4	\$1,259
999977	FREEDOM ONE CARRIERS LLC N HIGHWAY 88 CLAREMORE, OK 74017		1.37 NE	0	\$0

Data Note: Businesses are listed based on their proximity to the study area location. A maximum of 250 records can be displayed on one report. Data on the Business Locations report is based on the businesses whose location falls within the area of study. Total Sales, Total Daytime Business Population, Total Number of Businesses, and the Daytime Business (pop)/Residential Ratio are calculated using the collection of business points that fall within the area of study.

Source: Copyright 2022 Data Axle and Esri. Esri Total Residential Population forecasts for 2022. Data Axle Business Locations (Q3 2022).



Business Locator

Rogers County, OK (40131)
 Rogers County, OK (40131)
 Geography: County

Prepared by Esri

SIC Code	Business Name	Franchise	Distance From Site in Miles	Employees	Sales (\$000)
864102	AMERICAN LEGION POST 141 N HIGHWAY 88 CLAREMORE, OK 74017	A	1.37 NE	7	\$510
571911	QUILTER'S LIGHTHOUSE LLC N DAVIS AVE CLAREMORE, OK 74017		1.38 E	1	\$127
792207	CLAREMORE PERFORMING ARTS CTR N DAVIS AVE CLAREMORE, OK 74017		1.38 E	2	\$176
581208	LONG JOHN SILVER'S W WILL ROGERS BLVD CLAREMORE, OK 74017	J	1.38 E	14	\$547
581208	WENDY'S W WILL ROGERS BLVD CLAREMORE, OK 74017	X	1.38 E	25	\$0
571305	SOONER FLOORING & DESIGN N HIGHWAY 88 CLAREMORE, OK 74017		1.38 NE	2	\$395
784108	REDBOX W WILL ROGERS BLVD CLAREMORE, OK 74017	R	1.40 E	0	\$0
541103	KUM & GO W WILL ROGERS BLVD CLAREMORE, OK 74017	K	1.40 E	7	\$1,188
598406	BLUE RHINO W WILL ROGERS BLVD CLAREMORE, OK 74017	H	1.40 E	0	\$0
832210	ROGERS COUNTY ADULT N HIGHWAY 88 CLAREMORE, OK 74017		1.40 NE	10	\$243
999977	SUNSET HORIZON N HIGHWAY 88 CLAREMORE, OK 74017		1.40 NE	0	\$0
802104	FLAWLESS SMILE DENTISTRY W BLUE STARR DR CLAREMORE, OK 74017		1.40 E	6	\$837
999977	D R T LLC W BLUE STARR DR CLAREMORE, OK 74017		1.40 E	0	\$0
802101	A FAMILY DENTISTRY W BLUE STARR DR CLAREMORE, OK 74017	24	1.41 E	3	\$558
839902	OXFORD HOUSE CENTUM S WORTMAN AVE CLAREMORE, OK 74017		1.42 E	10	\$0
581208	MC DONALD'S W WILL ROGERS BLVD CLAREMORE, OK 74017	K	1.42 E	60	\$2,343

Data Note: Businesses are listed based on their proximity to the study area location. A maximum of 250 records can be displayed on one report. Data on the Business Locations report is based on the businesses whose location falls within the area of study. Total Sales, Total Daytime Business Population, Total Number of Businesses, and the Daytime Business (pop)/Residential Ratio are calculated using the collection of business points that fall within the area of study.

Source: Copyright 2022 Data Axle and Esri. Esri Total Residential Population forecasts for 2022. Data Axle Business Locations (Q3 2022).



Business Locator

Rogers County, OK (40131)
 Rogers County, OK (40131)
 Geography: County

Prepared by Esri

SIC Code	Business Name	Franchise	Distance From Site in Miles	Employees	Sales (\$000)
871301	PAYNE SURVEYING SVC PC W WILL ROGERS BLVD CLAREMORE, OK 74017		1.42 E	4	\$328
641112	DAVID MERRIMAN INS AGCY INC W BLUE STARR DR CLAREMORE, OK 74017	%Y	1.42 E	3	\$383
641112	STATE FARM INSURANCE W BLUE STARR DR CLAREMORE, OK 74017	%Y	1.42 E	5	\$637
721201	A ONE W WILL ROGERS BLVD CLAREMORE, OK 74017		1.42 E	2	\$156
481207	BOOST MOBILE W WILL ROGERS BLVD CLAREMORE, OK 74017		1.43 E	2	\$1,336
592102	WINE DOWN SPIRITS W WILL ROGERS BLVD CLAREMORE, OK 74017		1.43 E	2	\$444
541103	P & E TRADING CO W WILL ROGERS BLVD CLAREMORE, OK 74017		1.43 E	3	\$0
802101	BJP DENTAL PLLC W BLUE STARR DR CLAREMORE, OK 74017	2	1.43 E	5	\$837
581222	PAPA MURPHY'S TAKE 'N' BAKE W WILL ROGERS BLVD CLAREMORE, OK 74017	S	1.44 E	10	\$391
609903	APPROVED CASH ADVANCE W WILL ROGERS BLVD CLAREMORE, OK 74017		1.44 E	1	\$794
723106	SUPERCUTS W WILL ROGERS BLVD CLAREMORE, OK 74017	U	1.45 E	4	\$112
581208	SUBWAY W WILL ROGERS BLVD CLAREMORE, OK 74017	R	1.46 E	11	\$430
614101	SECURITY FINANCE W WILL ROGERS BLVD CLAREMORE, OK 74017	S	1.47 E	3	\$1,375
581208	TACO BELL W WILL ROGERS BLVD CLAREMORE, OK 74017	T	1.47 E	24	\$938
581208	TACO BUENO W WILL ROGERS BLVD CLAREMORE, OK 74017	¥	1.47 E	20	\$781
873422	KIRKPATRICK SCALES INC N CHAMBERS TRL CLAREMORE, OK 74017		1.48 E	6	\$0

Data Note: Businesses are listed based on their proximity to the study area location. A maximum of 250 records can be displayed on one report. Data on the Business Locations report is based on the businesses whose location falls within the area of study. Total Sales, Total Daytime Business Population, Total Number of Businesses, and the Daytime Business (pop)/Residential Ratio are calculated using the collection of business points that fall within the area of study.

Source: Copyright 2022 Data Axle and Esri. Esri Total Residential Population forecasts for 2022. Data Axle Business Locations (Q3 2022).



Business Locator

Rogers County, OK (40131)
 Rogers County, OK (40131)
 Geography: County

Prepared by Esri

SIC Code	Business Name	Franchise	Distance From Site in Miles	Employees	Sales (\$000)
753601	SUNSTOPPERS OF CLAREMORE N CHAMBERS TRL CLAREMORE, OK 74017		1.48 E	2	\$0
734201	FARRIS AULT EXTERMINATORS S CHAMBERS AVE CLAREMORE, OK 74017		1.48 E	4	\$306
653116	WILSON LILLIE & ASSOC S CHAMBERS AVE CLAREMORE, OK 74017		1.48 E	3	\$322
899999	SAFENET SERVICES W DUPONT ST CLAREMORE, OK 74017		1.49 E	12	\$1,484
751401	ENTERPRISE RENT-A-CAR W WILL ROGERS BLVD CLAREMORE, OK 74017	0	1.50 E	2	\$394
653118	OKLAHOMES REALTY INC PARADISE PKWY CLAREMORE, OK 74017		1.51 E	3	\$322
651303	CHALET 1400 APARTMENTS W BLUE STARR DR CLAREMORE, OK 74017		1.51 E	2	\$275
729943	ART & SOUL ARCHER DR CLAREMORE, OK 74017		1.52 E	1	\$25
641112	ROGERS COUNTY FARM BUREAU W WILL ROGERS BLVD CLAREMORE, OK 74017)I	1.53 E	8	\$1,020
861107	OKLAHOMA FARM BUREAU W WILL ROGERS BLVD CLAREMORE, OK 74017		1.53 E	4	\$0
641112	OKLAHOMA FARM BUREAU INSURANCE W WILL ROGERS BLVD CLAREMORE, OK 74017	I	1.53 E	4	\$510
999977	JONATHAN WILES LLC W WILL ROGERS BLVD CLAREMORE, OK 74017		1.53 E	0	\$0
507406	LOCKE WHOLESALE HTG & COOLING W WILL ROGERS BLVD CLAREMORE, OK 74017		1.53 E	3	\$1,833
521110	LOCKE SUPPLY CO W WILL ROGERS BLVD CLAREMORE, OK 74017		1.53 E	4	\$1,833
809907	PULSE HEALTH & WELLNESS LLC W WILL ROGERS BLVD CLAREMORE, OK 74017		1.53 E	8	\$0
553111	AUTOZONE W WILL ROGERS BLVD CLAREMORE, OK 74017	2	1.54 E	12	\$2,516

Data Note: Businesses are listed based on their proximity to the study area location. A maximum of 250 records can be displayed on one report. Data on the Business Locations report is based on the businesses whose location falls within the area of study. Total Sales, Total Daytime Business Population, Total Number of Businesses, and the Daytime Business (pop)/Residential Ratio are calculated using the collection of business points that fall within the area of study.

Source: Copyright 2022 Data Axle and Esri. Esri Total Residential Population forecasts for 2022. Data Axle Business Locations (Q3 2022).



Business Locator

Rogers County, OK (40131)
 Rogers County, OK (40131)
 Geography: County

Prepared by Esri

SIC Code	Business Name	Franchise	Distance From Site in Miles	Employees	Sales (\$000)
641112	FARM BUREAU PROPERTY-CASUALTY W WILL ROGERS BLVD CLAREMORE, OK 74017	I	1.54 E	3	\$510
651501	PARK-IT MOBILE HOME PARK S CHAMBERS AVE CLAREMORE, OK 74017		1.54 E	2	\$211
072104	ERWIN'S AFFORDABLE PEST CNTRL S CHAMBERS AVE CLAREMORE, OK 74017		1.55 E	2	\$453
999977	UNIQUE SPECIALTIES LLC S CHAMBERS AVE CLAREMORE, OK 74017		1.55 E	0	\$0
753834	SMART START S CHAMBERS AVE CLAREMORE, OK 74017		1.55 E	4	\$3,740
581208	HUGO'S FAMILY RESTAURANT ARCHER DR CLAREMORE, OK 74017		1.55 E	7	\$274
801101	EASTERN OK ORTHO-SPORTS MDCN W WILL ROGERS BLVD CLAREMORE, OK 74017	RV	1.55 E	7	\$1,119
721201	B & L CLEANERS W WILL ROGERS BLVD CLAREMORE, OK 74017		1.55 E	3	\$133
807129	TULSA MRI LLC W WILL ROGERS BLVD CLAREMORE, OK 74017		1.55 E	8	\$999
804959	ADVANCED ORTHOPEDICS W WILL ROGERS BLVD CLAREMORE, OK 74017		1.55 E	3	\$0
602103	ATM W BLUE STARR DR CLAREMORE, OK 74017	o	1.56 E	0	\$0
592102	BLUE STARR LIQUOR W BLUE STARR DR CLAREMORE, OK 74017		1.56 E	2	\$444
581208	ASIAN DINER W BLUE STARR DR CLAREMORE, OK 74017		1.57 E	1	\$40
074203	ARK ANIMAL HOSPITAL ARCHER DR CLAREMORE, OK 74017		1.58 E	14	\$1,313
176103	MITCHELL SEAMLESS GUTTERING E ALLSUP AVE CLAREMORE, OK 74019		1.60 SW	2	\$226
804918	PEDIATRIC THERAPIES SUMMIT W BLUE STARR DR CLAREMORE, OK 74017		1.61 E	40	\$1,826

Data Note: Businesses are listed based on their proximity to the study area location. A maximum of 250 records can be displayed on one report. Data on the Business Locations report is based on the businesses whose location falls within the area of study. Total Sales, Total Daytime Business Population, Total Number of Businesses, and the Daytime Business (pop)/Residential Ratio are calculated using the collection of business points that fall within the area of study.

Source: Copyright 2022 Data Axle and Esri. Esri Total Residential Population forecasts for 2022. Data Axle Business Locations (Q3 2022).



Business Locator

Rogers County, OK (40131)
 Rogers County, OK (40131)
 Geography: County

Prepared by Esri

SIC Code	Business Name	Franchise	Distance From Site in Miles	Employees	Sales (\$000)
804918	SUMMIT PHYSICAL THERAPY INC W BLUE STARR DR CLAREMORE, OK 74017		1.61 E	20	\$913
864101	ELKS LODGE SUMMIT DR CLAREMORE, OK 74017	D	1.61 NE	2	\$0
653118	EDINA REALTY WINONA W WILL ROGERS BLVD CLAREMORE, OK 74017		1.61 E	3	\$322
594214	BARNES & NOBLE COLLEGE WSTE WILL ROGERS BLVD CLAREMORE, OK 74017		1.61 E	2	\$208
602101	BANCFIRST W WILL ROGERS BLVD CLAREMORE, OK 74017	6	1.61 E	5	\$973
602103	ATM W WILL ROGERS BLVD CLAREMORE, OK 74017	d	1.61 E	0	\$0
533101	BURKES OUTLET W WILL ROGERS BLVD CLAREMORE, OK 74017	g	1.61 E	4	\$1,236
421304	MCCARTHY TRANSPORT E NORTHPARK CLAREMORE, OK 74017		1.63 N	2	\$345
735930	RENT-A-CENTER W WILL ROGERS BLVD CLAREMORE, OK 74017	R	1.63 E	7	\$1,007
525115	HARBOR FREIGHT W WILL ROGERS BLVD CLAREMORE, OK 74017	H	1.63 E	15	\$1,952
599940	FLORAL CREATIONS W WILL ROGERS BLVD CLAREMORE, OK 74017		1.64 E	2	\$305
599992	BATH & BODY WORKS W WILL ROGERS BLVD CLAREMORE, OK 74017	A	1.64 E	15	\$2,283
422503	MAXI MINI STORAGE S MORETZ AVE CLAREMORE, OK 74017		1.64 E	1	\$100
753201	EASON COLLISION SPECLSTS INC S MORETZ AVE CLAREMORE, OK 74017		1.64 SE	11	\$1,176
723102	CALIFORNIA NAILS W WILL ROGERS BLVD CLAREMORE, OK 74017		1.64 E	2	\$56
943103	ROGERS COUNTY HEALTH DEPT N HIGHWAY 88 CLAREMORE, OK 74017		1.65 NE	44	\$0

Data Note: Businesses are listed based on their proximity to the study area location. A maximum of 250 records can be displayed on one report. Data on the Business Locations report is based on the businesses whose location falls within the area of study. Total Sales, Total Daytime Business Population, Total Number of Businesses, and the Daytime Business (pop)/Residential Ratio are calculated using the collection of business points that fall within the area of study.

Source: Copyright 2022 Data Axle and Esri. Esri Total Residential Population forecasts for 2022. Data Axle Business Locations (Q3 2022).



Business Locator

Rogers County, OK (40131)
 Rogers County, OK (40131)
 Geography: County

Prepared by Esri

SIC Code	Business Name	Franchise	Distance From Site in Miles	Employees	Sales (\$000)
359903	C & C MACHINE INC W 1ST ST CLAREMORE, OK 74017		1.65 E	7	\$1,306
573112	GAME X CHANGE W WILL ROGERS BLVD CLAREMORE, OK 74017		1.65 E	5	\$975
835101	BLUE STARR RANCH W BLUE STARR DR CLAREMORE, OK 74017		1.65 E	18	\$312
078204	ENTERPRISE SOD STORE S MORETZ AVE CLAREMORE, OK 74017		1.66 E	2	\$148
784108	REDBOX W WILL ROGERS BLVD CLAREMORE, OK 74017	R	1.66 E	0	\$0
651201	NE-MAR SHOPPING CTR W WILL ROGERS BLVD CLAREMORE, OK 74017	U	1.66 E	2	\$615
481207	BTC BROADBAND W WILL ROGERS BLVD CLAREMORE, OK 74017		1.66 E	3	\$2,004
541105	REASOR'S-CLAREMORE W WILL ROGERS BLVD CLAREMORE, OK 74017		1.66 E	125	\$21,210
598406	BLUE RHINO W WILL ROGERS BLVD CLAREMORE, OK 74017	H	1.66 E	0	\$0
591205	REASOR'S PHARMACY W WILL ROGERS BLVD CLAREMORE, OK 74017		1.66 E	148	\$40,903
804101	FOUTZ CHIROPRACTIC W WILL ROGERS BLVD CLAREMORE, OK 74017		1.66 E	3	\$199
562105	BLING BOUTIQUE W WILL ROGERS BLVD CLAREMORE, OK 74017		1.66 E	5	\$0
591205	J & J PHARMACY & GIFTS W WILL ROGERS BLVD CLAREMORE, OK 74017		1.66 E	18	\$4,975
723102	GALAXY NAIL SALON & SPA LLC W WILL ROGERS BLVD CLAREMORE, OK 74017		1.66 E	2	\$56
581208	BILL-RUTH SUBS-BURGERS-CLRM W WILL ROGERS BLVD CLAREMORE, OK 74017		1.66 E	5	\$274
999977	MCAC LLC W WILL ROGERS BLVD CLAREMORE, OK 74017		1.66 E	0	\$0

Data Note: Businesses are listed based on their proximity to the study area location. A maximum of 250 records can be displayed on one report. Data on the Business Locations report is based on the businesses whose location falls within the area of study. Total Sales, Total Daytime Business Population, Total Number of Businesses, and the Daytime Business (pop)/Residential Ratio are calculated using the collection of business points that fall within the area of study.

Source: Copyright 2022 Data Axle and Esri. Esri Total Residential Population forecasts for 2022. Data Axle Business Locations (Q3 2022).



Business Locator

Rogers County, OK (40131)
 Rogers County, OK (40131)
 Geography: County

Prepared by Esri

SIC Code	Business Name	Franchise	Distance From Site in Miles	Employees	Sales (\$000)
602103	ATM W WILL ROGERS BLVD CLAREMORE, OK 74017		1.66 E	0	\$0
581208	CARL'S CONEY ISLAND W WILL ROGERS BLVD CLAREMORE, OK 74017		1.66 E	4	\$157
179938	CLAREMORE'S FENCE CO S MORETZ AVE CLAREMORE, OK 74017		1.66 E	5	\$637
653108	JERIC PROPERTIES LC S MORETZ AVE CLAREMORE, OK 74017		1.66 E	2	\$215
999966	HADRIAN FENCE LLC S MORETZ AVE CLAREMORE, OK 74017		1.66 E	8	\$0
561101	MEN'S SHOP W WILL ROGERS BLVD CLAREMORE, OK 74017		1.67 E	2	\$257
581208	TOKYO W WILL ROGERS BLVD CLAREMORE, OK 74017		1.67 E	7	\$274
573117	TEEL ELECTRONICS-RADIOSHACK W WILL ROGERS BLVD CLAREMORE, OK 74017		1.67 E	4	\$780
602103	ATM ARCHER DR CLAREMORE, OK 74017		1.67 E	0	\$0
571220	MEEK'S NORTH INC ARCHER DR CLAREMORE, OK 74017		1.67 E	3	\$377
614113	CHECK 'N GO W WILL ROGERS BLVD CLAREMORE, OK 74017	C	1.68 E	2	\$917
545102	CHERRYBERRY W WILL ROGERS BLVD CLAREMORE, OK 74017	C	1.68 E	9	\$482
804909	619 NUTRITION W WILL ROGERS BLVD CLAREMORE, OK 74017		1.68 E	7	\$320
614113	CHECK INTO CASH W WILL ROGERS BLVD CLAREMORE, OK 74017	7	1.68 E	2	\$917
821103	CLAREMORE CHRISTIAN SCHOOL W BLUE STARR DR CLAREMORE, OK 74017	EJKPS	1.68 E	20	\$0
641112	JAMES MUNS INSURANCE AGENCY ARCHER DR CLAREMORE, OK 74017		1.69 E	1	\$128

Data Note: Businesses are listed based on their proximity to the study area location. A maximum of 250 records can be displayed on one report. Data on the Business Locations report is based on the businesses whose location falls within the area of study. Total Sales, Total Daytime Business Population, Total Number of Businesses, and the Daytime Business (pop)/Residential Ratio are calculated using the collection of business points that fall within the area of study.

Source: Copyright 2022 Data Axle and Esri. Esri Total Residential Population forecasts for 2022. Data Axle Business Locations (Q3 2022).



Business Locator

Rogers County, OK (40131)
 Rogers County, OK (40131)
 Geography: County

Prepared by Esri

SIC Code	Business Name	Franchise	Distance From Site in Miles	Employees	Sales (\$000)
864102	DISABLED AMERICAN VETERANS W DUPONT ST CLAREMORE, OK 74017		1.69 E	2	\$0
581208	ARBY'S W WILL ROGERS BLVD CLAREMORE, OK 74017	N	1.69 E	29	\$1,133
729944	HEAT WAVE TANNING W WILL ROGERS BLVD CLAREMORE, OK 74017		1.69 E	2	\$49
729944	HEAT WAVE TANNING SALON W WILL ROGERS BLVD CLAREMORE, OK 74017		1.69 E	4	\$98
799901	ROLLER WORLD W 4TH ST CLAREMORE, OK 74017	R	1.70 E	7	\$510
565101	MAURICES W WILL ROGERS BLVD CLAREMORE, OK 74017	4	1.71 E	7	\$828
551102	JACK KISSEE FORD INC S LYNN RIGGS BLVD CLAREMORE, OK 74017	J	1.71 SE	30	\$12,289
899999	PROGRSSVE ORTHTC PROSTHETIC W WILL ROGERS BLVD CLAREMORE, OK 74017		1.71 E	12	\$1,484
571216	WIND RIVER TRADING CO LLC W WILL ROGERS BLVD CLAREMORE, OK 74017		1.71 E	3	\$377
152144	C & A ROOFING & CONSTRUCTION W WILL ROGERS BLVD CLAREMORE, OK 74017		1.71 E	4	\$1,259
723106	JUST TEASIN SALON LLP W WILL ROGERS BLVD CLAREMORE, OK 74017		1.71 E	5	\$140
753801	LONNIE'S CUSTOM AUTO & ACCES S OWALLA AVE CLAREMORE, OK 74017		1.71 E	2	\$224

Data Note: Businesses are listed based on their proximity to the study area location. A maximum of 250 records can be displayed on one report. Data on the Business Locations report is based on the businesses whose location falls within the area of study. Total Sales, Total Daytime Business Population, Total Number of Businesses, and the Daytime Business (pop)/Residential Ratio are calculated using the collection of business points that fall within the area of study.

Source: Copyright 2022 Data Axle and Esri. Esri Total Residential Population forecasts for 2022. Data Axle Business Locations (Q3 2022).